

PUBLIC NOTICE:  
SIGNIFICANT ALTERATION OF A MISSISSIPPI LANDMARK PROPERTY

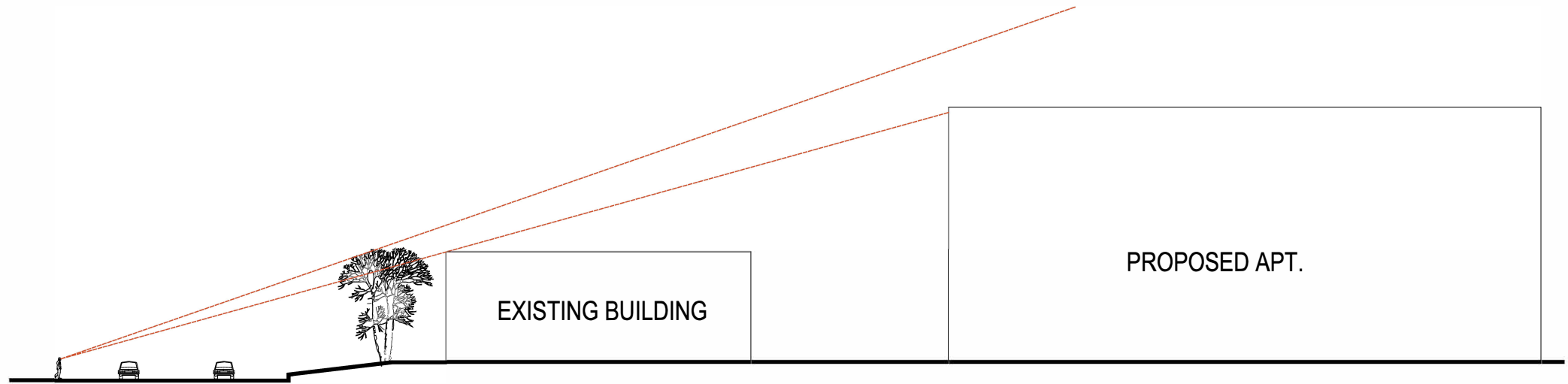
The Board of Trustees of the Mississippi Department of Archives and History requests public comment on the proposal to construct a six-story apartment building on the **Duling School** property, located in Jackson, Hinds County. This property is designated as a Mississippi Landmark under the provisions of the Antiquities Law of Mississippi, Miss. Code Ann. § 39-7-1 *et seq.*

Mississippi Landmark designation recognizes the historical significance of the property and requires that proposed significant alterations that may affect the property's historic character are reviewed by the Board of Trustees of the Mississippi Department of Archives and History.

The Board of Trustees invites public comment on the proposed significant alteration of the **Duling School** property. Information regarding the proposal is posted on the following pages. Comments and requests for additional information should be sent to Chelsea Stewart, Mississippi Landmarks Assistant, Historic Preservation Division, Mississippi Department of Archives and History, P. O. Box 571, Jackson, Mississippi 39205-0571 or [cstewart@mdah.ms.gov](mailto:cstewart@mdah.ms.gov) within thirty (30) days from the date of this publication.

Date published: 7/26/2021





SECTION DIAGRAM





DOULING SCHOOL

John Craft  
Antiques & Interiors

DOULING SCHOOL  
SHOPS

Douling Market

Douling Market





BABALU

PLEASE  
DO NOT  
PARK  
HERE

Trustmark  
Bank and Finance  
&  
Lending Partner





Trustmark

Drive Thru









A multi-story building with a mix of brick and stone facade. The ground floor features a large, arched entrance. Above the arch are several windows. The upper floors have a grid of windows and balconies.

A white sedan parked in a parking lot.

A white pickup truck parked in a parking lot.

STOP

Two people walking on a sidewalk.

A dark-colored building with the word "Bank" visible on its side.

A multi-story building with a light-colored facade and dark brick accents.

A church steeple visible in the background.